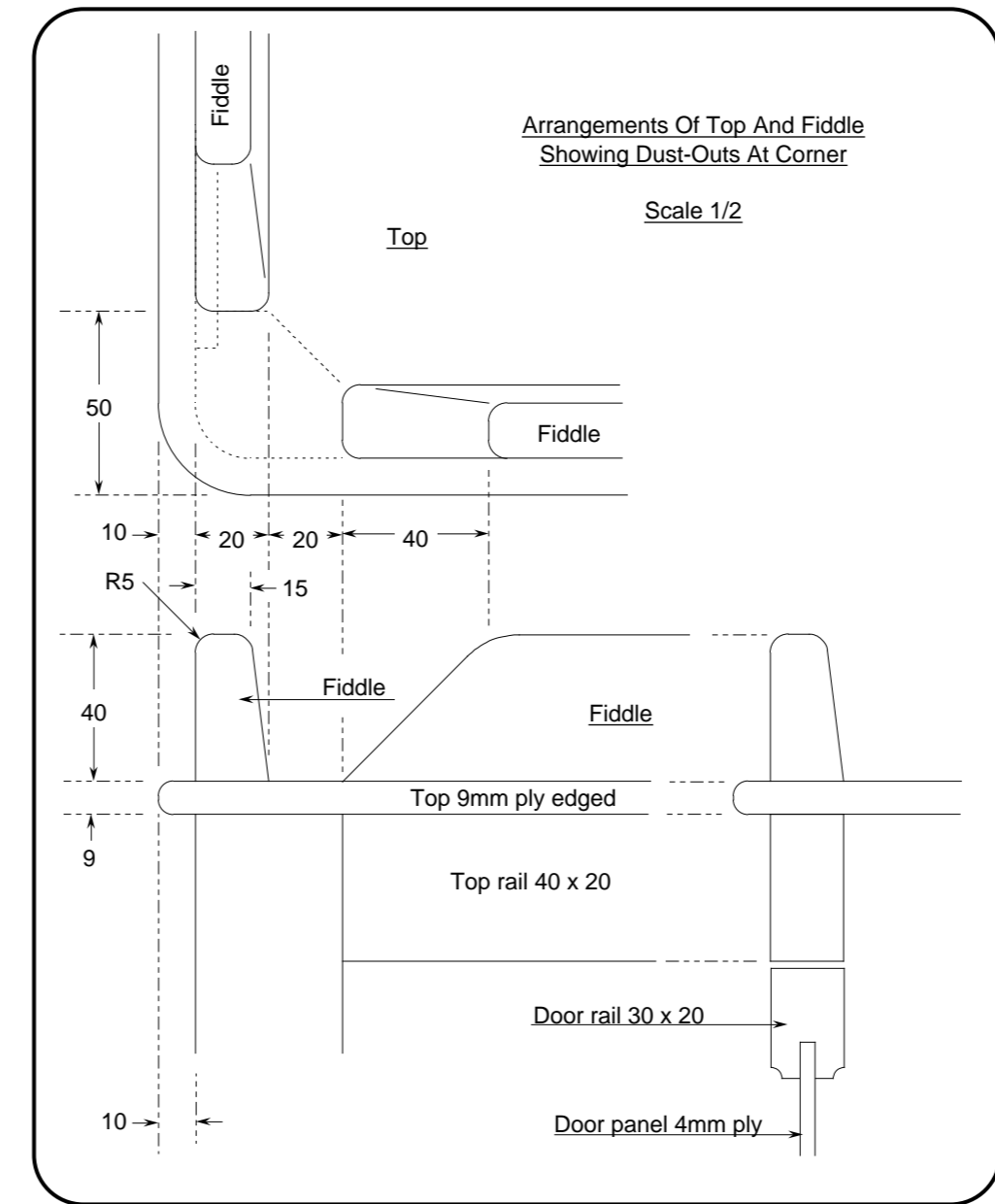
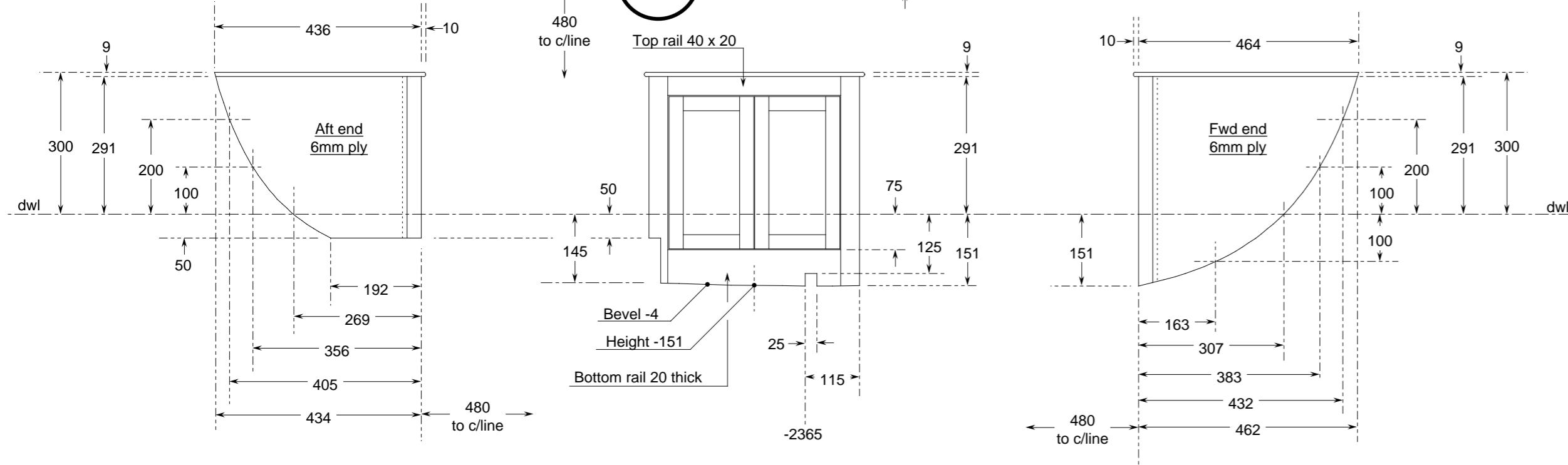


Note: Top is 9mm ply edged with solid. Top overhangs front and ends by 10mm. Edges of top radiused off.



Note: Unit front is framed up from 20mm solid timbe and 40 x 40 corner posts. Rails and styles are mortices and tenoned together. Doors are framed up similarly with 4mm ply panels set in 10mm deep grooves in framing. Ends are 6mm ply set in 10mm rebates in corner posts. Top is 9mm ply, edged in solid and radiused. Top overhangs front and ends by 10mm.

This is the port unit; stbd unit is a mirror image. Units can be used for sink and cook-stove respectively - or as required.

Fiddles have dust-outs at inboard corners - they blade off on to hull outboard.

- General Notes:**
1. The Zero Point is the intersection of the Datum Water Line (dwl) with the stemface.
  2. Positions are measured fwd and aft (marked "-") of the Zero Point.
  3. Heights are measured above and below (marked "+/-") the dwl.
  4. Offsets are measured each side of the fore-&-aft centreline.
  5. Waterlines are designated "wl" followed by their height.
  6. Buttocks are designated "b" followed by their offset.
  7. Diagonals are designated "d" followed by their start height on the centreline and their angle to it.
  8. Offsets on diagonals are measured down the angle of the diagonal.
  9. Offsets are to inside of skin unless noted otherwise.

 <b>Boat 077</b> <b>Galley Units</b>	Scale 1/10 & 1/2
	Date 20/05/2000
	Plan No. 077/010/02
	Issue No. 01 web
All dimensions in millimetres unless noted otherwise	

© bmarkweb Ltd 2002 All Rights Reserved