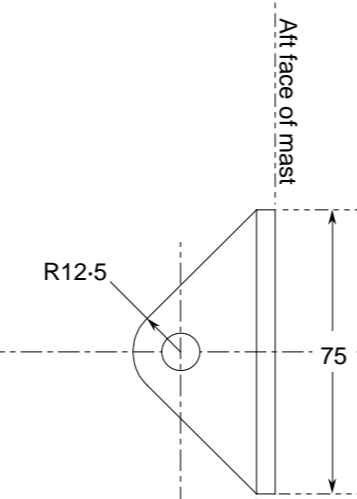


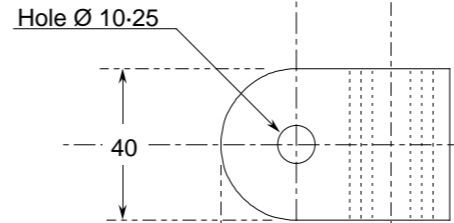
MAIN GOOSENECK

Hole one side plain Ø10; other side tapped M10. M10 hex bolt passes through & threads into strap & is secured by half-thickness lock-nut

Horiz. C/line
Vert. C/line



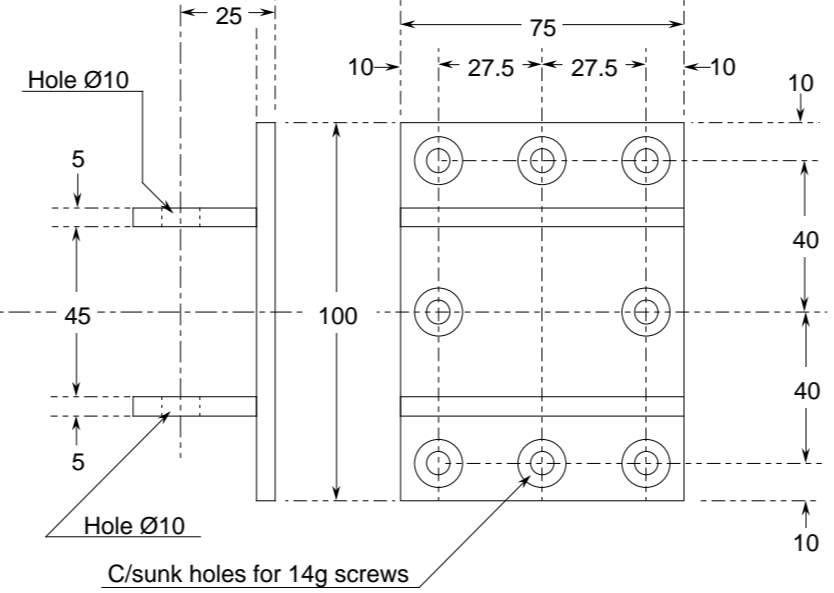
40 x 5 strap wrapped around bush and welded to it



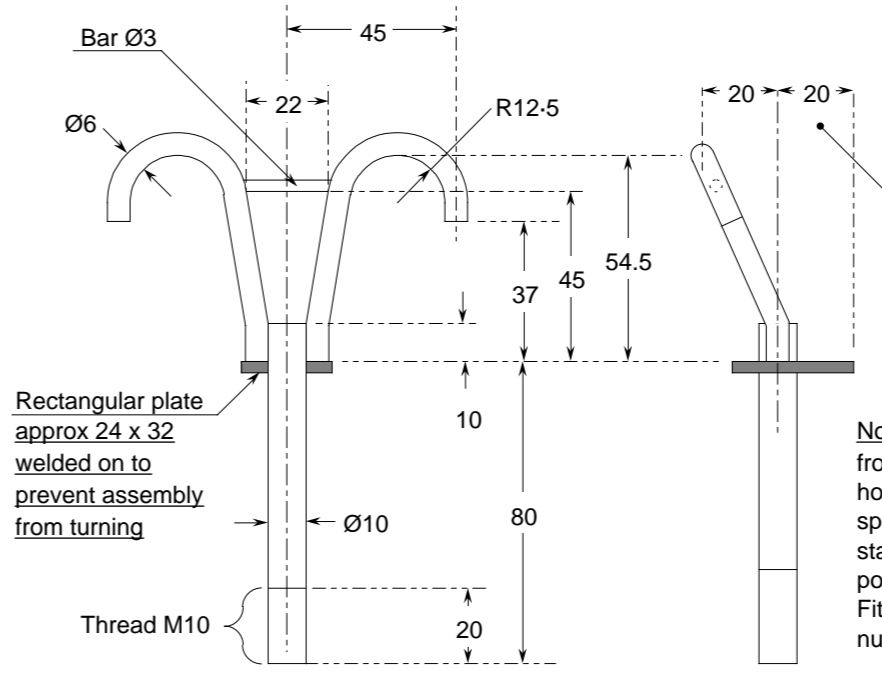
Bush Ø21 x Ø16 x 40 long

Delrin bush Ø16 x Ø 10-25 x 40 long

Bush Ø22 x Ø16 x 21 long, welded to straps



C/sunk holes for 14g screws

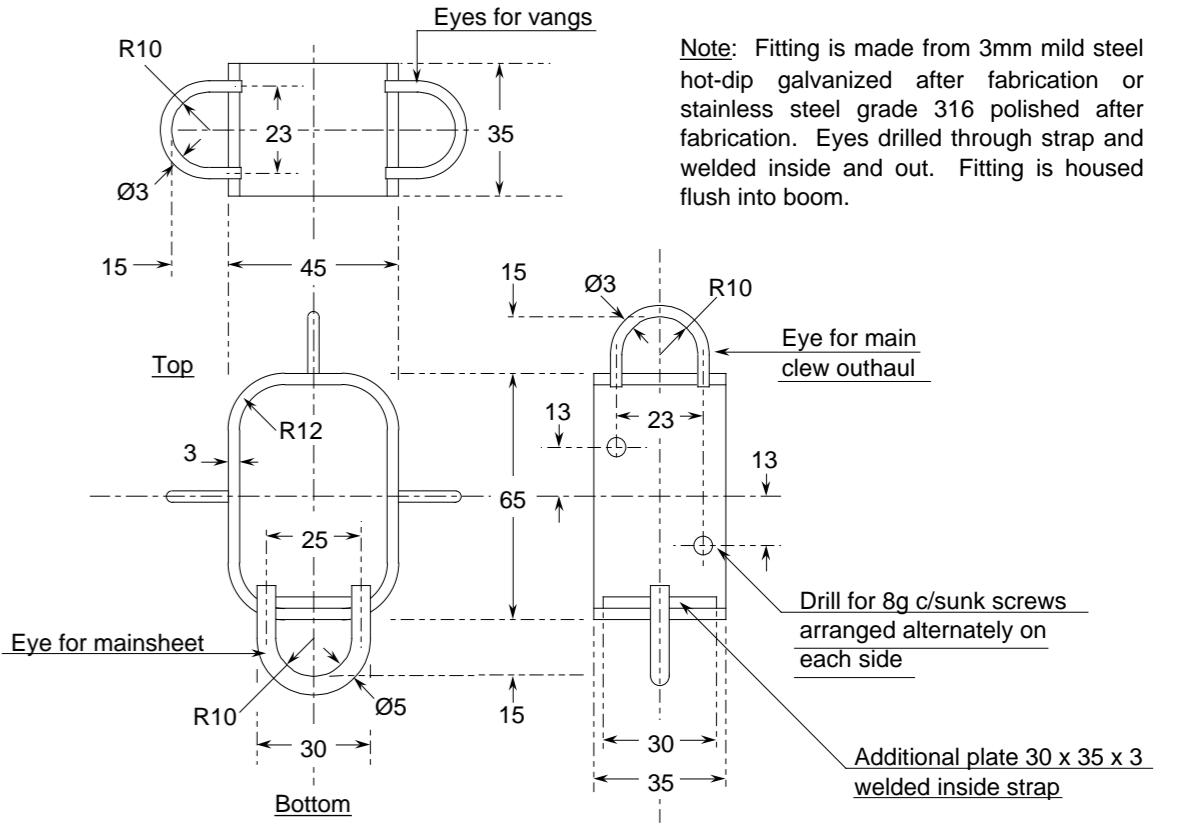


Rectangular plate approx 24 x 32 welded on to prevent assembly from turning

Thread M10

Note: Fitting fabricated from mild steel and hot-dipped galvanized and spun after fabrication, or stainless steel grade 316 polished after fabrication. Fitting is secured by M10 nut & lock-nut.

MAIN GOOSENECK PIN, TACK ATTACHMENT & REEF HOOKS



Note: Fitting is made from 3mm mild steel hot-dip galvanized after fabrication or stainless steel grade 316 polished after fabrication. Eyes drilled through strap and welded inside and out. Fitting is housed flush into boom.

MAIN BOOM OUTER END FITTING

Note: Gooseneck material mild steel hot-dip galvanized after fabrication. Gooseneck made from 5mm material (side straps 3mm and bushes as shown). Delrin for bearing bushes and washers. Hole sizes given are after galvanizing - so allow clearance on holes in steel items for galvanizing thickness.

- General Notes:**
1. The Zero Point is the intersection of the Datum Water Line (dwl) with the stemface.
 2. Positions are measured fwd and aft (marked "-") of the Zero Point.
 3. Heights are measured above and below (marked "+") the dwl.
 4. Offsets are measured each side of the fore-&-aft centreline.
 5. Waterlines are designated "wl" followed by their height.
 6. Buttocks are designated "b" followed by their offset.
 7. Diagonals are designated "d" followed by their start height on the centreline and their angle to it.
 8. Offsets on diagonals are measured down the angle of the diagonal.
 9. Offsets are to inside of skin unless noted otherwise.

Note: If possible check with sailmaker before making up gooseneck pin to ensure that reef hooks & attachment for tack lashing will suit position of sail cringles etc.

Boat 077 Main Ironwork	Scale	1/2
	Date	20/05/2000
	Plan No.	077/011/05
	Issue No.	01 web
		All dimensions in millimetres unless noted otherwise